

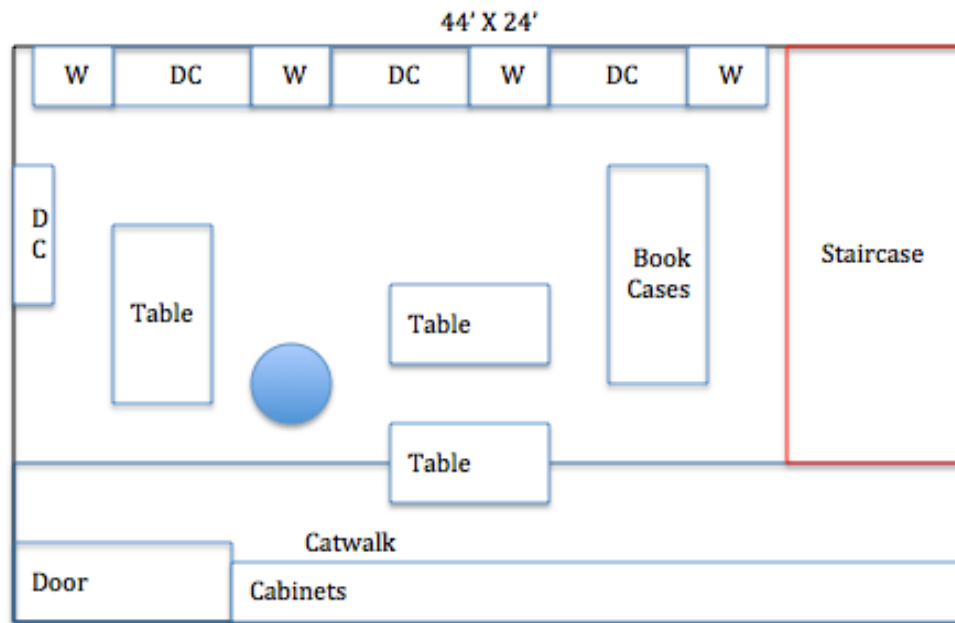
# Location Scouting

John Todd and Karen Rich

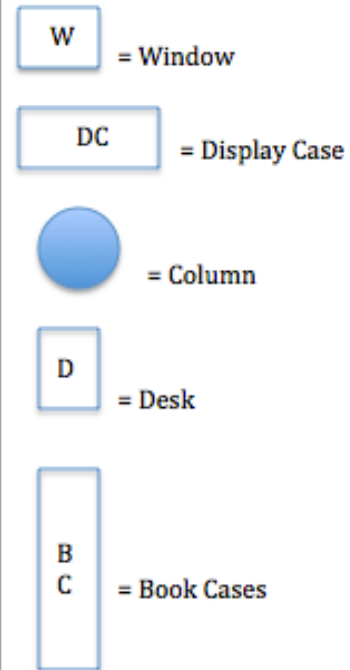
# Exterior of McGraw Hall



# Interior of McGraw Hall: Anthropology Collection Room



## Key:



**Location Diagram**

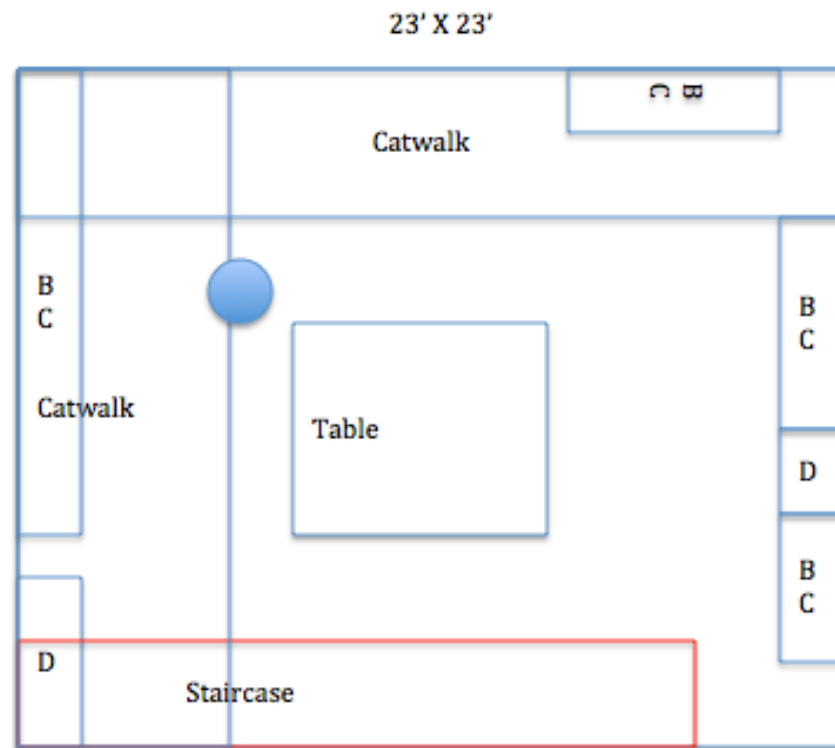
# Interior of McGraw Hall: Anthropology Collection Room



**Upon entering the Collection Room.**

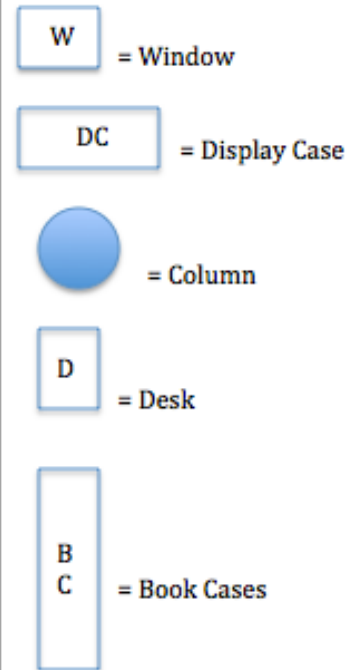


# Interior of McGraw Hall: Landscapes and Objects Laboratory



Location Diagram

## Key:



# Interior of McGraw Hall: Landscapes and Objects Laboratory



**Upon entering the Laboratory.**

# Interior of McGraw Hall: Class 215



# Interior of McGraw Hall: Lounge



**Upon entering the Lounge.**



# Staircases

